

# VKCD-1329/IR

Home | Security | Dome Cameras | Fixed

VKCD-1329/IR

1/3" Dome Fixed, Day&Night, DSS, DNR, DIS,

IR Illumination, F1.2/3.8-9.5mm, 600TVL

**Art-Nr. 92554**



SLD Security & Communications

## Main Features

1/3" Sony Super HAD II CCD

Removable IR Cut Filter

Sensitivity of 0.15Lux at F1.2 (Colour)

Multi Lingual On-screen Menu Control

High and Low Speed Shutter Control (MES/DSS)

Digital Noise Reduction (3D DNR)

Digital Image Stabilisation (DIS)

Automatic White Balance (ATW/AWB)

IR Illumination by 36 integral 850nm LEDs

Manual 3-axis Camera Gimbal

Supply Voltage: 12VDC or 24VAC

For Wall and Ceiling Flush and Surface Mount

## Specifications

Video standard	CCIR/PAL
System	day&night
Sensor size	1/3"
Imager	CCD, Sony Super HAD II Interline Transfer
Synchronization	Internal
Signal-to-noise ratio	52db (AGC OFF)
Sensitivity (at 50% video signal)	0.15Lux at F1.2 (colour), 0.08Lux (B&W), Videor measurement result
Horizontal resolution	600 TVL, (colour), 650 TVL (B&W)
Rotation range	359°
Tilt range	55° (+35° ~+90° from horizontal level)
Window blanking	Up to 8 masking areas
Automatic gain control (AGC)	OFF / Low / Mid / High selectable
Manual electronic shutter (MES)	1/120 ~1/10.000sec.

# VKCD-1329/IR

(Continuation Specifications)

<b>Low Speed Shutter</b>	yes
<b>Low speed shutter</b>	Automatic, 2 ~256 Fps.
<b>Digital Noise Reduction (DNR)</b>	yes, 3D
<b>Flickerless function</b>	On/Off switchable
<b>White balance</b>	ATW / AWB, Indoor / Outdoor
<b>White balance (ATW)</b>	Range: 2,500~9,500K, to 1,800~10,500K switchable
<b>Backlight compensation</b>	BLC, Adjustable zones, ON/OFF switchable
<b>Wide Dynamic Range (WDR)</b>	no
<b>Aperture Correction (APC)</b>	Horizontal and vertical
<b>IR cut filter</b>	switchable
<b>Video outputs</b>	CVBS, 1Vp-p, (C)VBS, 75ohms, BNC
<b>Lens mount</b>	integrated lens
<b>Lens type</b>	varifocal
<b>Lens</b>	F1.2/F2.0~360 / 3.8~9.5mm with galvanometer controlled iris
<b>Focal length</b>	3,8 mm - 9,5 mm
<b>Horizontal angle of view</b>	74,2° - 30°
<b>Digital Zoom</b>	10x, ON/OFF switchable
<b>Aperture range (F)</b>	F1.2~F360
<b>Iris control</b>	DC
<b>MOD (Minimum object distance)</b>	0,15 m
<b>Focus range</b>	0.15m ~∞
<b>Filter screw size</b>	not available
<b>Illumination</b>	36 LEDs 850nm. Integrated light sensor for On/Off switching of the illumination
<b>Illumination range</b>	approx. 35m (at a good light reflexion and 40% Videosignal)
<b>Motion Detection Function</b>	4 fields, ON/OFF switchable
<b>Analysis Functions</b>	no
<b>Menu languages</b>	English, German, French, Italian, Spanish
<b>OSD function control</b>	Brightness, Sharpness, Backlight Compensation, Electronic shutter (DSS), Manual high speed shutter (1/120 to 1/10,000), Automatic white balance, Manual white balance (Red/Blue), AGC, DNR, Motion Detection, Flickerless mode, Privacy window, Mirror, Day/Night
<b>Text display</b>	54 character label
<b>Sharpness correction</b>	Adjustment range: 0 ~3
<b>Brightness</b>	Adjustment range: -32 ~+32
<b>External connections</b>	Video (BNC), 2 pin power input
<b>Serial interfaces</b>	no
<b>Temperature range (Operation)</b>	-10° ~+50°C
<b>Heater</b>	optional
<b>Protection rating</b>	IP66

# VKCD-1329/IR

(Continuation Specifications)

<b>Supply voltage</b>	12VDC, 24VAC, (+/-10%)
<b>Power consumption</b>	6watts
<b>Vandalism resistant</b>	yes
<b>Colour (bubble)</b>	clear
<b>Camera fixing</b>	no
<b>Mounting</b>	surface mount, flush mount, wall mount
<b>Housing</b>	Outdoor
<b>Housing material</b>	Aluminium
<b>Colour (housing)</b>	Pantone Warm Gray 1C
<b>Weight</b>	1.1kg
<b>Parts supplied</b>	Screw set, Pipe cap driver, Torx wrench, Mounting template, Service monitor board and control cable, Manual
<b>Certificates</b>	CE

## Optional accessories

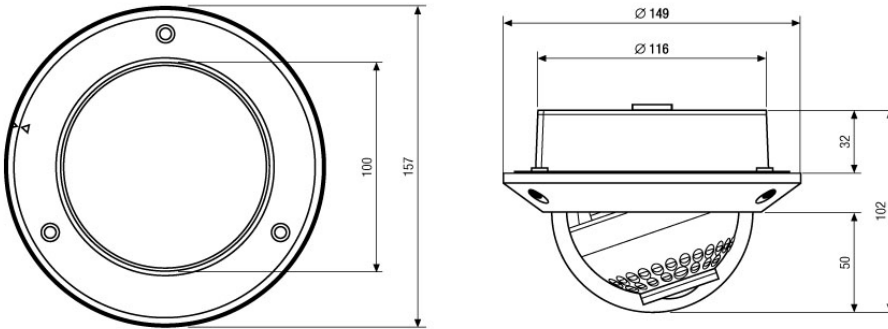
<b>70527</b>	<b>NE-132/AC24V</b>	Power Supply Unit 230VAC/24VAC (1.0A)
<b>70495</b>	<b>VT-PS12DC-7</b>	Plugable PSU w. Cont. & UK Mains plug-in 100-240VAC/12VDC-1.25A, Regulated
<b>70535</b>	<b>VT-PS12DC-8</b>	Plug-in Power Supply Unit 100-240VAC 12VDC (1.0Amp), Regulated, with DC Plug
<b>77773</b>	<b>VT-PS12DCDT1</b>	PSU 12VDC/1.0A, Regulated, Desktop Version, 1.8m Cables each w. open ends
<b>92562</b>	<b>VDOME/WB4</b>	Wall Mount Kit for VKCD-1329/IR and VKCD-1331
<b>92563</b>	<b>VDOME/WEDGE1</b>	Wedge Mount Kit for VKCD-1329/IR and VKCD-1331
<b>92565</b>	<b>VDOME/HB-K1</b>	Heater & Blower Kit 24VAC for VKCD-1329/IR and VKCD-1331

# VKCD-1329/IR

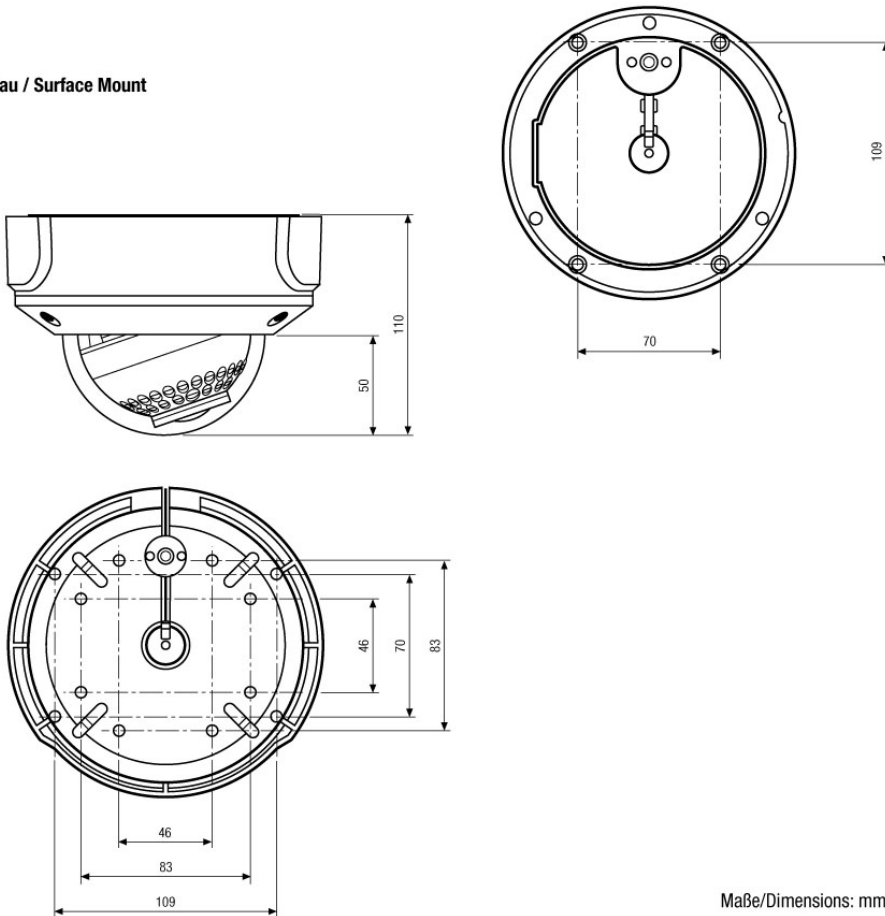
Home | Security | Dome Cameras | Fixed

## Technical drawing

### Einbau / Flush Mount



### Aufbau / Surface Mount



Maße/Dimensions: mm

SLD Security & Communications  
The Old Forge, Ockham Lane, Ockham, Surrey GU236PH England  
Phone +44.1483225633 · Fax +44.1483225634  
sales@sld.co.uk · www.sld.co.uk

SLD Security &  
Communications

